

# BAX® System Q7 Version 4.21.4.11714

## Features and Instructions

BAX System Q7 software release v4.21 contains several user interface features, new target options and error logging improvements.

We strongly recommend that you always install the most recent version as soon as possible for optimal performance. Please read all instructions thoroughly and ensure all required prerequisites are confirmed prior to beginning installation of the software update.

If you currently have a WIN7 computer system, please contact [diagnostics.support@hygiena.com](mailto:diagnostics.support@hygiena.com) or your local Hygiena® representative for upgrade support. **This release is NOT applicable for WIN7 systems.**

### Software Updates and Features for Release v4.21.4.11714 for WIN10 ONLY

#### ■ Install Package

- Single executable install with reduced size (2 GB)
  - Reorganization of software versioning:
    - Package: 4.21.4.11714
    - BAX System: 4.21.4.11712
    - Bridge: 4.21.4.11713
    - SDS: 1.3.1035.1
    - Analysis: 4.21.3.8313

#### ■ SDS Equipment Driver Improvements:

- Auto-recovery of instrument communication disconnection with notifications

#### ■ User Interface Enhancements:

- Option to export results as a .csv file
- About Dialog updates
- Removed the ability to initialize a run without instrument connection
- Feature to preserve calibration file during installation

#### ■ Application Insights:

- Improvements with more detailed logs for troubleshooting

#### ■ Certified Algorithms

- Additional targets:
  - STEC Screener *eae* ONLY
  - STEC Screener *stx* ONLY
  - Real-Time *E. coli* O157:H7 S-Target ONLY
- Display messages and confidence levels for:
  - Real-Time *E. coli* O157:H7 EXACT
  - Real-Time *Salmonella*

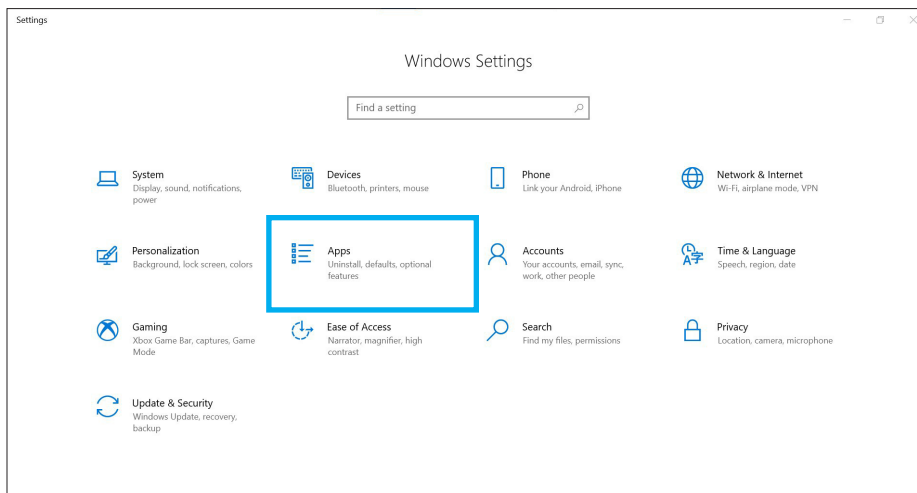
## Software Upgrade Instructions:

### 1. Required Prerequisites:

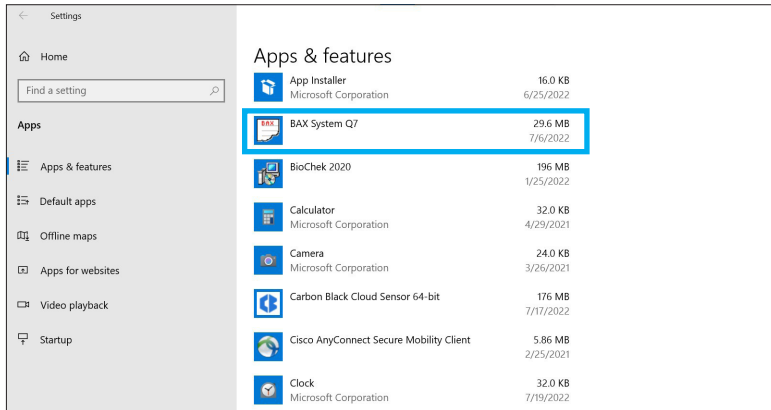
- **Regional Settings are in English**
- **Read/Write Permissions for the below file locations for all users**
  - C:\Program Files\MATLAB
  - C:\Program Files (x86)\BAX
  - C:\ProgramData\BAX Q7 System
    - All Power and Sleep Settings are set to Never.

### 2. Calibration storage and removal of current software:

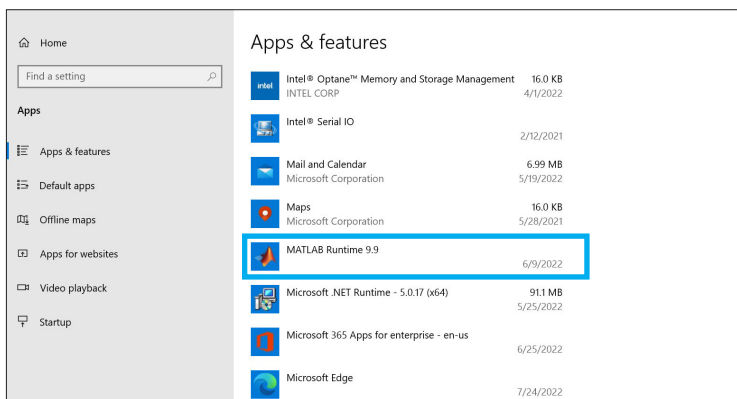
- **Back up the system's calibration file**
  - Select Operations > BAX Maintenance > Export Calibration from the menu bar.
  - Navigate to a new folder in which to store the backup file and click Save.
  - Name the calibration file (example: Q7Cal\_date.bqc).
- **Uninstall the previous version of the BAX Q7 application and ANY VERSION of MATLAB (REQUIRED)**
  - Navigate to Windows Settings and select Apps.



- Click on BAX System Q7, select Uninstall, and agree (click Yes) on next window to initiate removal.



- Click on ANY version of the MATLAB application, select Uninstall, and click Agree on next window (this may take several minutes).



**Restart Computer BEFORE continuing to step 3**

## Software Installation Instructions for Steps 3 and 4

### 3. Download 4.21.4.11714 software by clicking this [link](#) or the button from the [BAX Q7 Page](#)

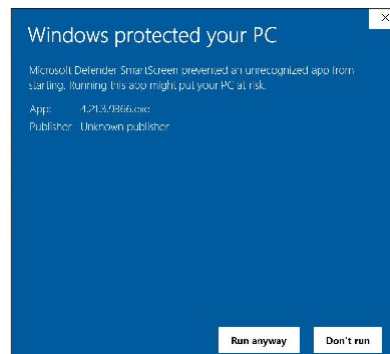
■ **Transfer the download to a memory/USB stick if the computer doesn't have internet access.**

Click on the Q74.21.4.11714 icon and the program will automatically start execution of the installation.

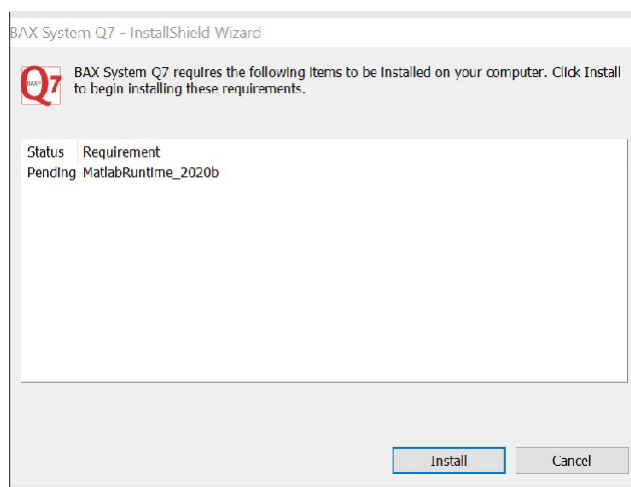


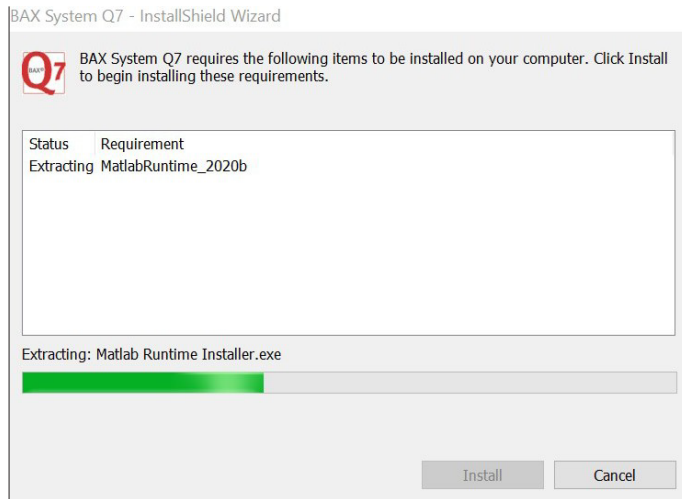
■ **A windows protect screen may pop up. Select More Info, then select Run anyway.**

On the next pop-up, select Yes to allow the installation to begin.



### 4. MATLAB updates will install first. Follow prompts below and select the default responses:

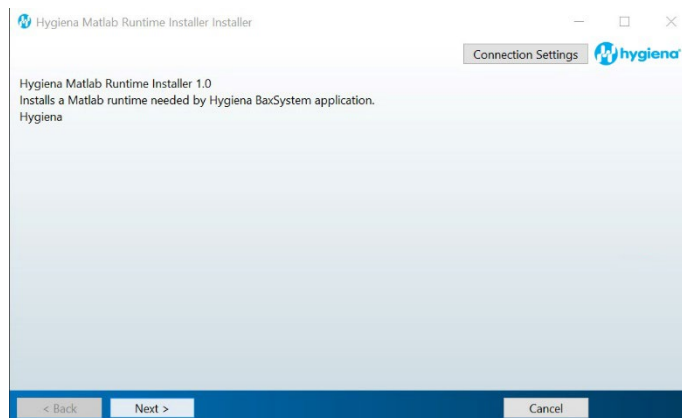


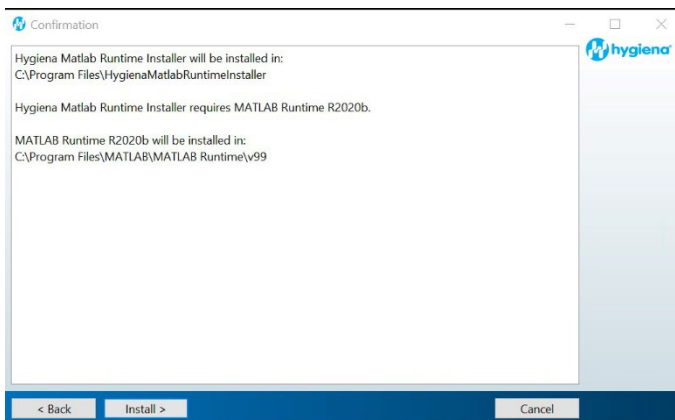
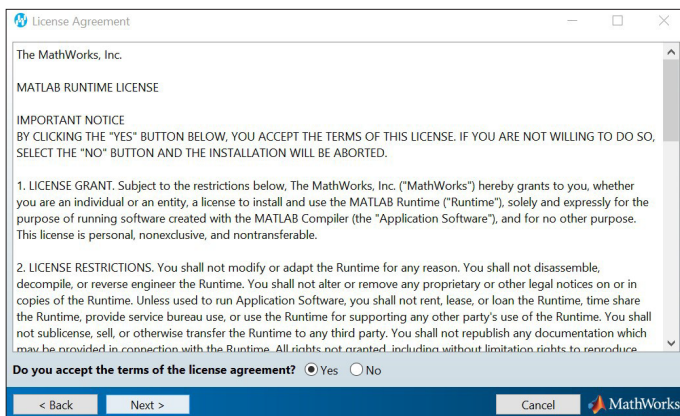
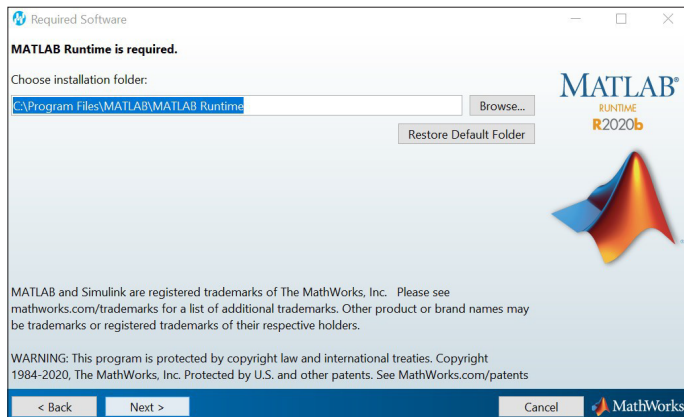
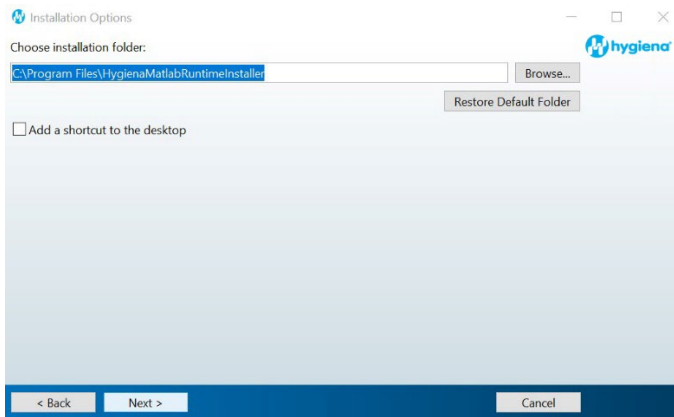


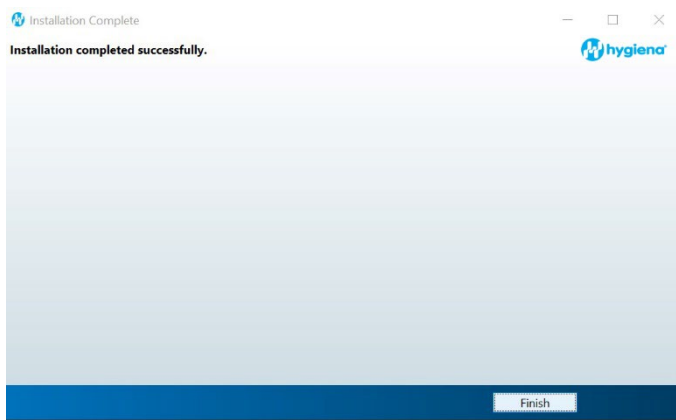
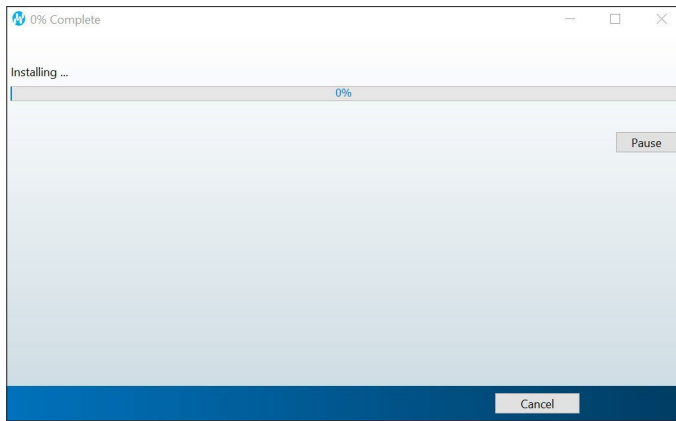
**Install error: VCRUNTIME140.dll was not found. (shown below)**



- The install will end after you click on OK. To resolve this issue, please download and install the patch **vc\_redist.x64.exe** from <https://www.microsoft.com/en-us/download/details.aspx?id=52685>. After installing this patch, go back and retry installing the updated BAX System Q7 software.

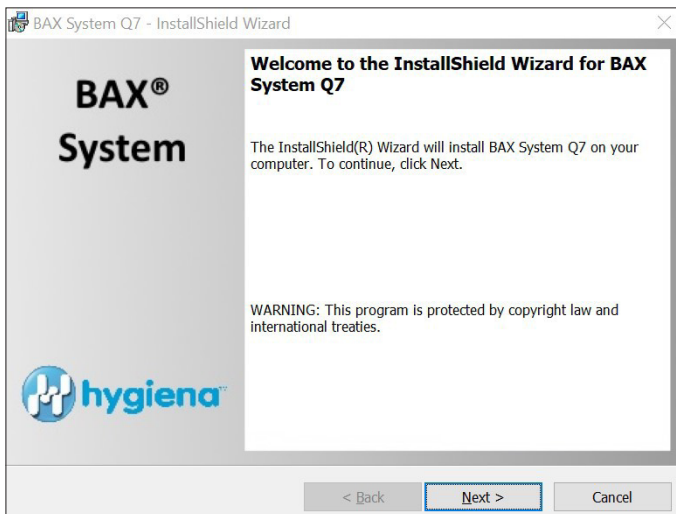






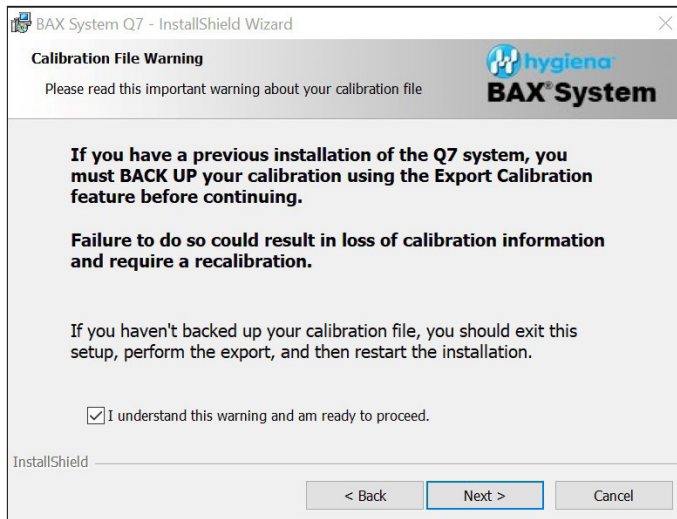
**5. Following MATLAB installation, the BAX Q7 application install will initiate. Read the prompts carefully. Choose the default responses.**

- Welcome Window – click Next.



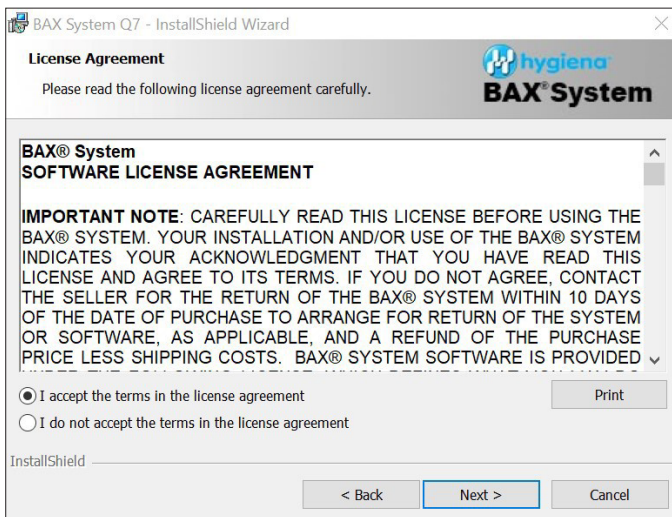
■ **Calibration File Warning – ENSURE YOU HAVE BACKED UP THE CALIBRATION FILE.**

Check box and click Next.



■ **License Agreement**

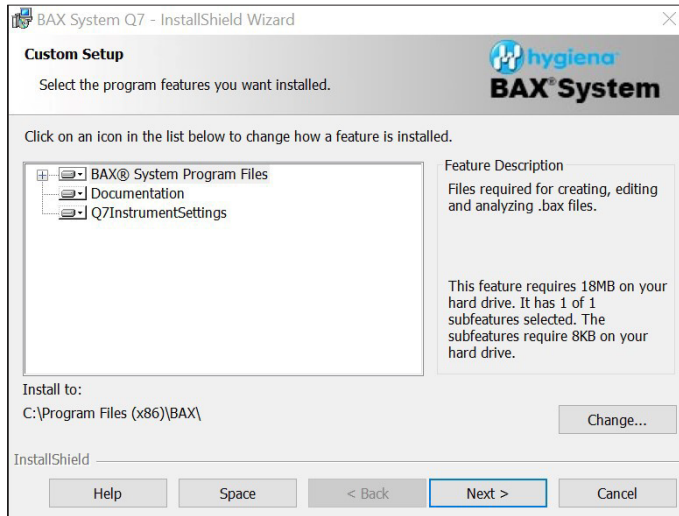
Check Accept Terms box and click Next.





## ■ Custom Setup

- Click Next.



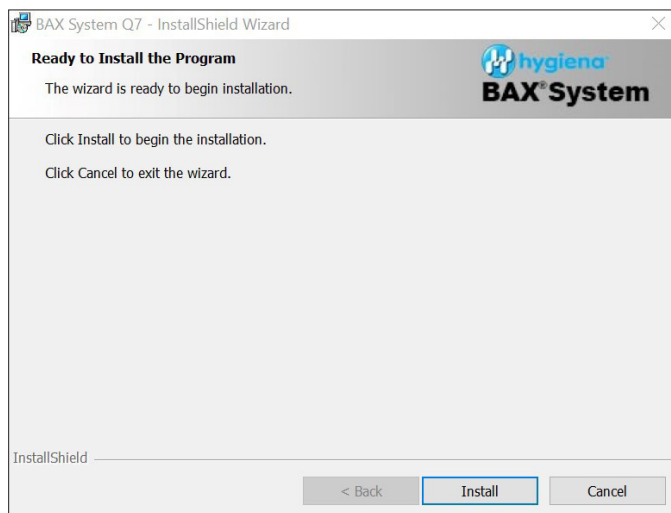
## ■ Password Protection

- BAX default is disabled password protection. Choose an option for your lab, then click Next.



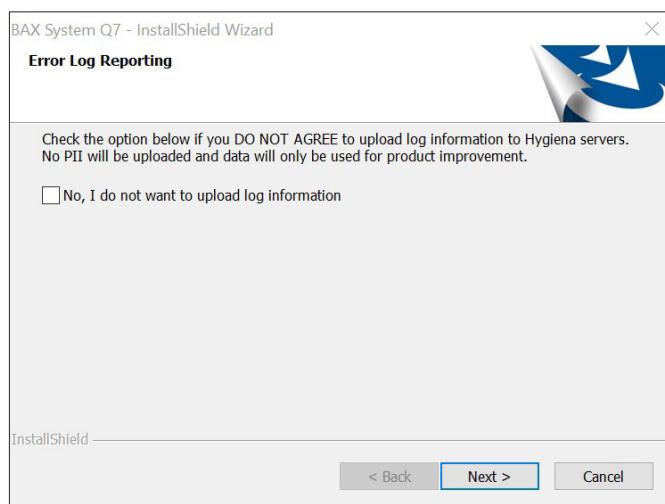
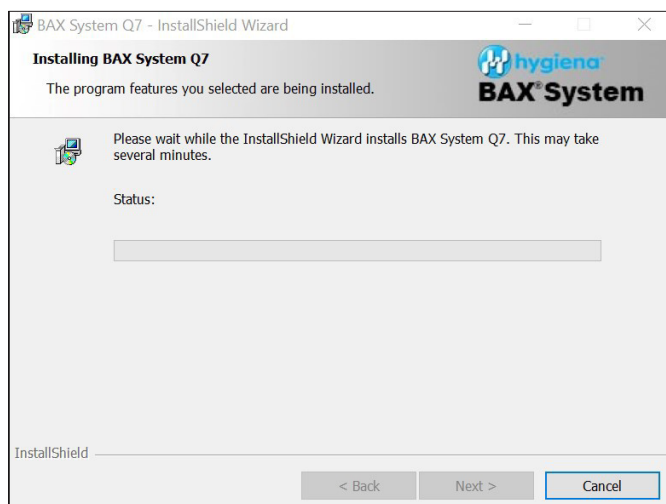
## ■ Ready to Install Program

- Click Install.

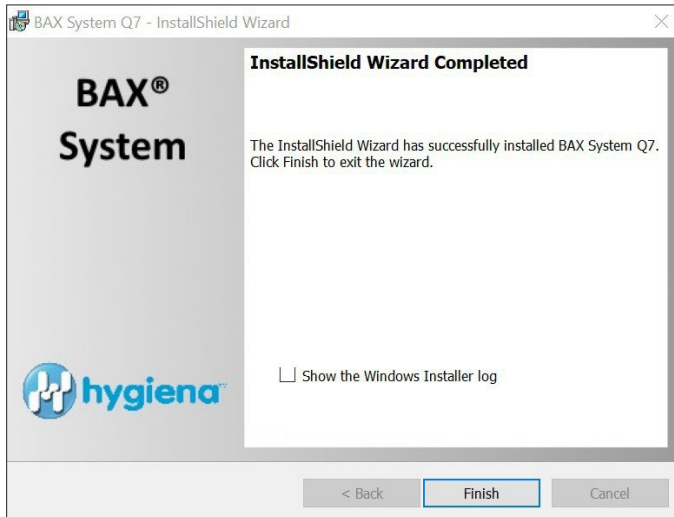


## ■ Installing BAX System Q7 Software

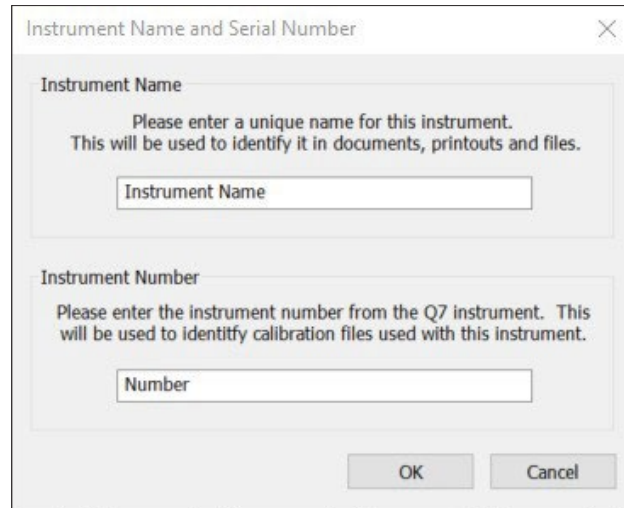
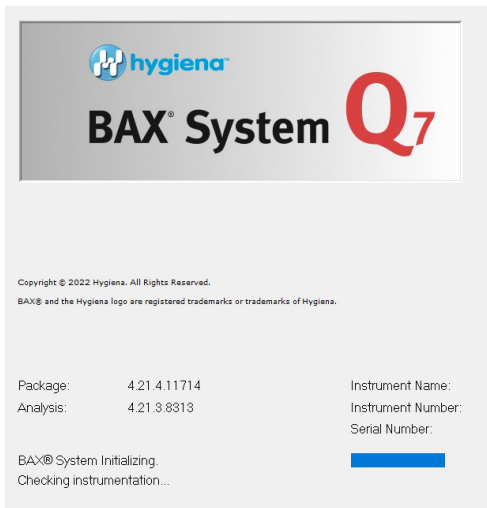
- During installation, an Error Log Reporting window will pop up. We recommend NOT checking the box so the system can collect software and/or hardware errors in the Log Files to assist Diagnostics Support in troubleshooting. However, please review and decide what is appropriate for your lab.
- Select Next to complete the installation.



- InstallShield Wizard Complete.
- Select Finish.



- Click on the desktop icon to initiate program. New open screen will have software version 4.21.4.11714.
- Enter the Instrument Name and Serial Number.
  - This will appear on reports and should be utilized.

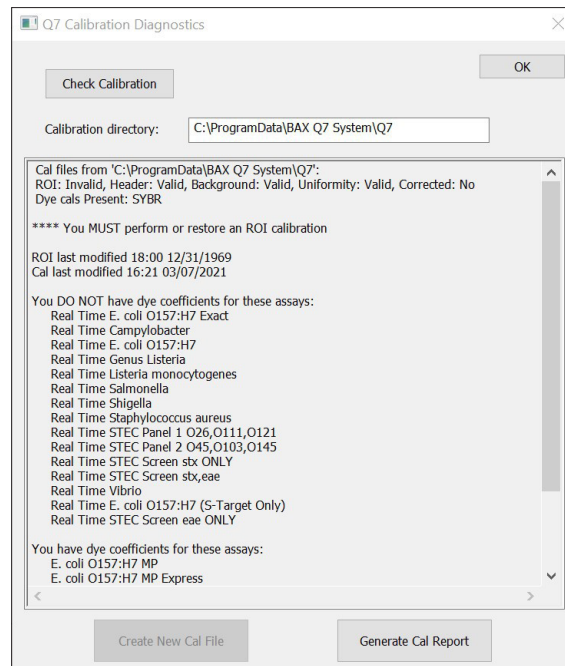
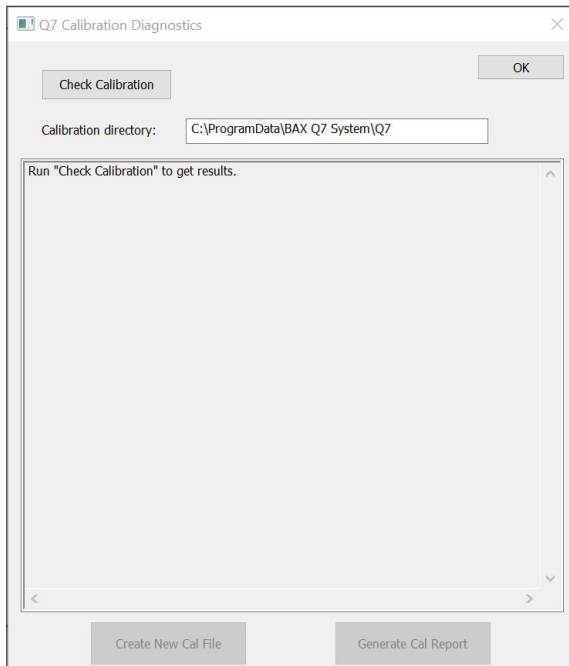


## 6. CHECK system's calibration (NEW FEATURE)

■ From the menu bar, select **Diagnostics > Calibration** to open the **Q7 Calibration Diagnostics** window

☐ Click the Check Calibration button to determine the status:

- If calibration is available, no further actions are needed.
- If calibration is **NOT** optimal or **NOT** found:
  - Import the backed-up calibration file by selecting **Operations > BAX Maintenance > Import Calibration** from the menu bar and selecting the backed-up calibration file from step 2.



## 7. Ready to perform BAX System Analysis

■ Define proper targets that are used in your lab by selecting **View > Select Targets >** then in the window, highlight targets being used, and then use arrow buttons to move targets from **Define in System** to **Available for Selection** window.

