

BAX[®] System Q7

Real-Time PCR Assay for *E. coli* O157:H7 Exact

The BAX[®] System Real-Time PCR Assay for *E. coli* O157:H7 Exact eliminates the possibility of a positive result from mixed populations of non-*E. coli* O157:H7 strains and is designed to work in tandem with all other BAX System Real-Time *E. coli* assays, including the STEC suite: Real-Time STEC Screening (*stx* and *eae*), Real-Time STEC Panel 1 (O26, O111, O121) and Real-Time STEC Panel 2 (O45, O103, O145).



Features & Benefits:

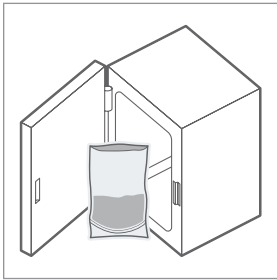
- Clear yes-or-no results in as little as 8 hours for select matrices
- Positive molecular results are definitive for *E. coli* O157:H7 DNA, eliminating the time and resources needed for additional confirmation
- Carefully designed assay allows detection as low as 10⁴ CFU/mL after enrichment
- Internal controls included in every test to validate results, even in the absence of target
- Compatible with many other BAX System assays for efficient processing
- Minimal components and simplified workflows to maximize efficiency and ease-of-use
- Flexible protocols available to meet your unique workflows

Validations, Certifications and Approvals:

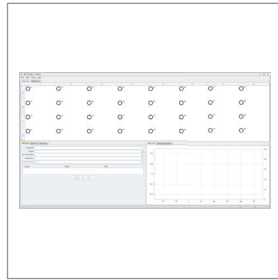
- **AOAC Research Institute**
*Performance Tested Method*SM #102003
Fresh raw ground beef, fresh raw beef trim, sampling cloth (such as MicroTally[®] cloth) beef trim swabs, leafy greens, raw fluid milk, dried cannabis flower and dried hemp flower.
- **Health Canada MFLP #115**
Validated for use on raw meat products.

Product No.	Description	Quantity
KIT2039	BAX [®] System Real-Time PCR Assay for <i>E. coli</i> O157:H7 Exact	96 tests per kit

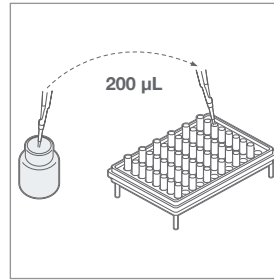
BAX System Protocol*



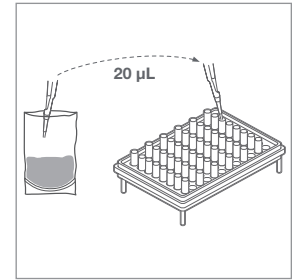
Enrich samples.



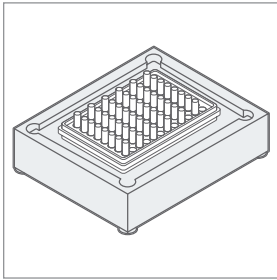
Create rack file and warm up cycler.



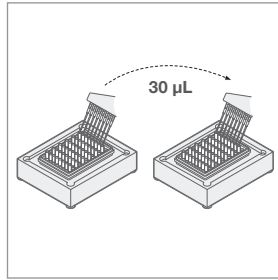
Add protease to lysis buffer bottle, mix then dispense 200 µl of solution into cluster tubes.



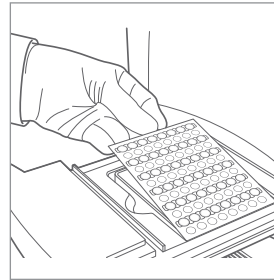
Transfer 20 µL sample enrichment to cluster tubes.



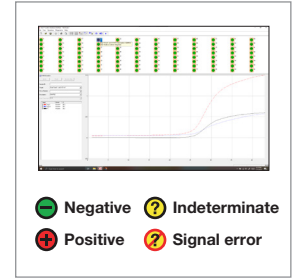
Place samples on automated thermal block for lysis and cooling.



After transferring lysates to PCR tubes in a cooling block, hold for 10-30 minutes.



Place sealed PCR tubes in cycler and immediately click "NEXT" to run program.



Review results.

*Refer to Ready Reference Guide for detailed steps.

Related Products

BAX® System MP Media

Available enrichment media for customers looking to take full advantage of rapid time-to-results and ease-of-use offered by select BAX System *E. coli* and *Salmonella* assays.

StatMedia™ Soluble Packets

Gamma-irradiated BAX System MP Media in convenient, water-soluble packets for reduced mess and easy preparation. Simply drop in pre-warmed sterile water and mix before adding sample.

BAX® System Real-Time PCR Assays – STEC Suite

Designed to identify the top six non-O157 Shiga toxin-producing *E. coli* (STEC) strains defined by the USDA Food Safety and Inspection Service (FSIS) as adulterants in the United States' beef industry.

BAX® System Real-Time PCR Assay for *Salmonella*

Uses real-time PCR technology to reduce processing time to about one hour, helping food companies make product release decisions with speed and confidence.

Product No.	Description	Quantity
MED2003	BAX® System MP Media	2.5 kg
MED2016	StatMedia™ Soluble Packets	20 x 5 x 33.75 g
KIT2021	BAX® System Real-Time PCR Assay for STEC Screening	96 tests per kit
KIT2008	BAX® System Real-Time PCR Assay for STEC Panel 1	48 tests per kit
KIT2009	BAX® System Real-Time PCR Assay for STEC Panel 2	48 tests per kit
KIT2006	BAX® System Real-Time PCR Assay for <i>Salmonella</i>	96 tests per kit