

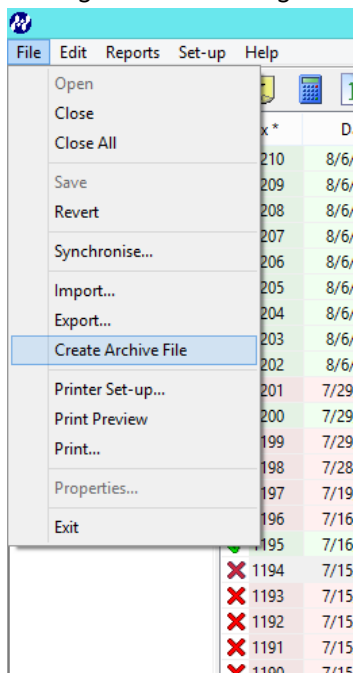
## Upgrading from SureTrend Version 2.02 or Earlier

Older versions of SureTrend Software do not support the increased data capacity of new Hygiene luminometers. To migrate test results and configuration data from older versions of SureTrend to Version 3.01, follow the instructions below. Please note that some of the steps mentioned below may need to be done by the IT administrator.

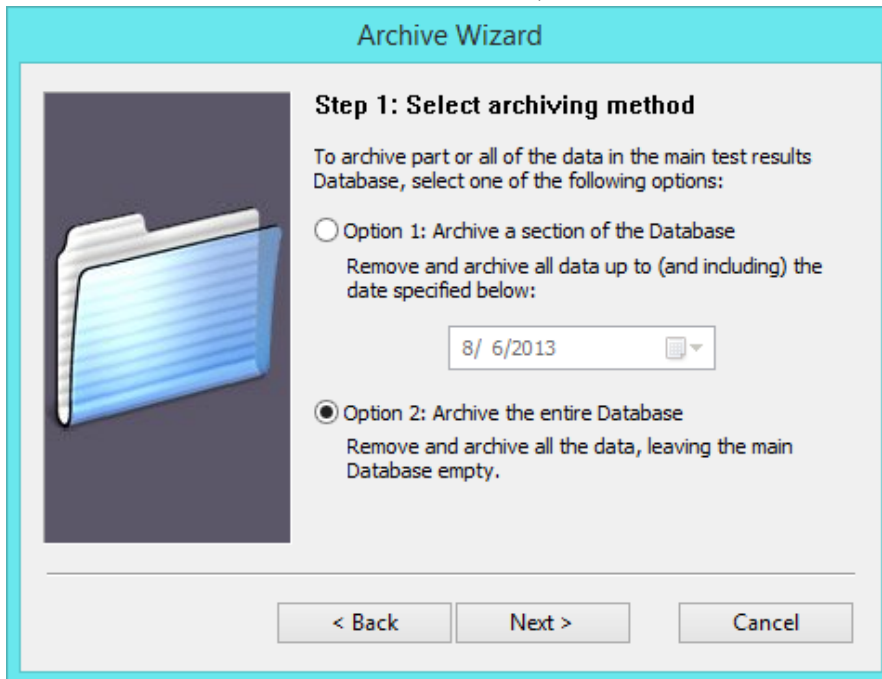
1. Open the existing SureTrend software that you already have installed.
2. Select "View Database" from the menu.

<b>Synchronise</b>	Get new test results data from the SystemSURE unit and store them in the Results Database
<b>View Database</b>	View the entire Results Database with the most recent test results data first
<b>Standard Report</b>	Run your Standard Report #1 on the Results Database
<b>Failures Report</b>	Run the Failures Report on the Results Database
<b>Add New Unit</b>	Add a new SystemSURE Unit to the SureTrend software
<b>Exit SureTrend</b>	Save all data and exit the SureTrend software

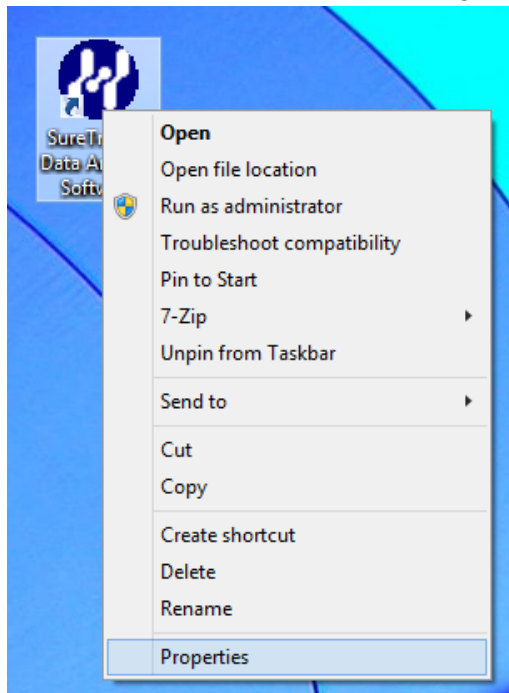
3. With the results database open, select "File> Export" and save an Excel file of all results in your database. Though this step is not required, it serves as a precautionary backup of all existing test results.
4. Next, you will archive your database. Select "File > Create Archive File"



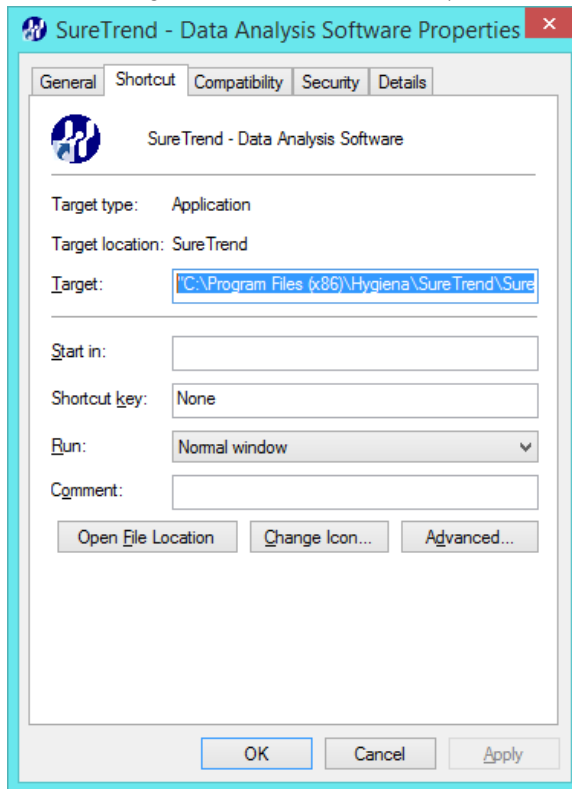
- This will open a wizard. Follow the prompts and select "Option 2: Archive the entire Database". Click "Next" then "Finish" to complete.



- Now you must collect four files: the database archive, unit set up data, user data, and options data.
  - To determine where SureTrend is installed on your machine, right click on the shortcut used to launch SureTrend (usually on the desktop) and select "Properties".



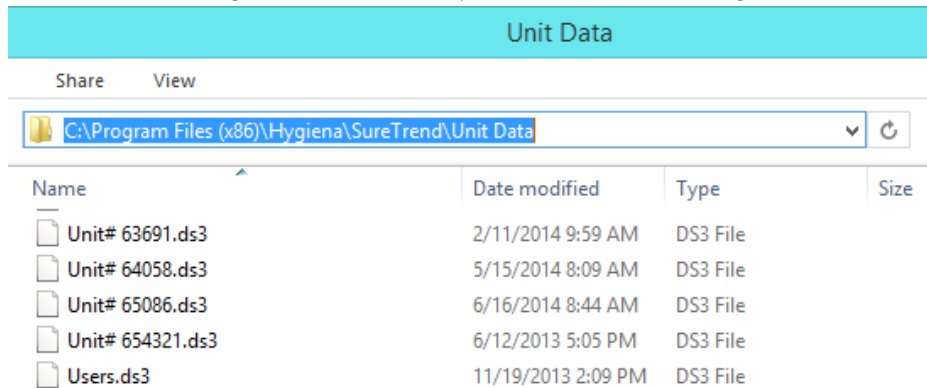
- b. The Target field will contain the path to the location of SureTrend.



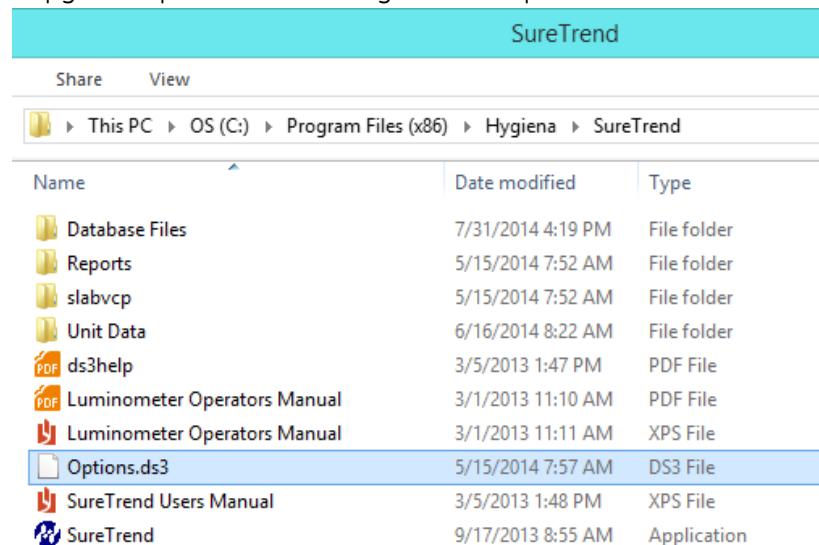
7. The archive file will be stored in the same folder where the software has been installed, in a subfolder called "Database Files". For most users, this is in C:\Program Files\Hygiene\SureTrend\Database Files
- a. The file is called "Database Archive" and then a series of numbers. Save this file somewhere that can be accessed after the existing software has been uninstalled, such as on the Desktop.

Database Files				
Share		View		
C:\Program Files (x86)\Hygiene\SureTrend\Database Files				
Name	Date modified	Type	Size	
Database Archive 20000101-20140409.ds3	7/31/2014 4:07 PM	DS3 File	74 KB	
Database Archive 20000108-20000507.ds3	3/12/2013 8:43 AM	DS3 File	1 KB	
Database Archive 20120327-20120331.ds3	3/19/2013 3:13 PM	DS3 File	4 KB	
Database Archive 20120402-20121227.ds3	3/19/2013 3:15 PM	DS3 File	44 KB	
Database Archive 20120402-20130127.ds3	3/19/2013 3:14 PM	DS3 File	65 KB	
Database Archive 20130123-20130127.ds3	3/19/2013 3:25 PM	DS3 File	21 KB	

8. The unit setup data and user data will both be in a folder called "Unit Data". For most users, this is in C:\Program Files \Hygiena\SureTrend\Unit Data
  - a. The files in this folder should also be copied to your Desktop. If you have multiple luminometers, you will have multiple units listed, but only one users file.

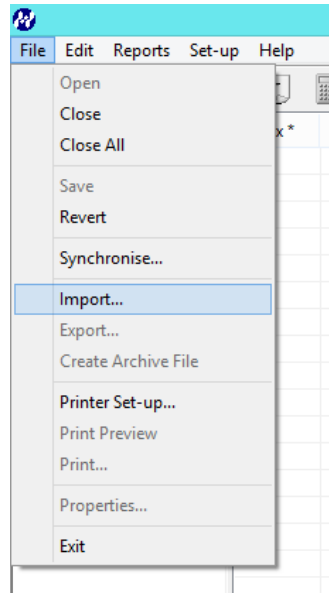


9. The last file to collect is the options file which contains any preference settings. This file is found in the "SureTrend" folder. For most users, this is in: C:\Program Files\Hygiena\SureTrend
  - a. Copy the "Options.ds3" file to your desktop.

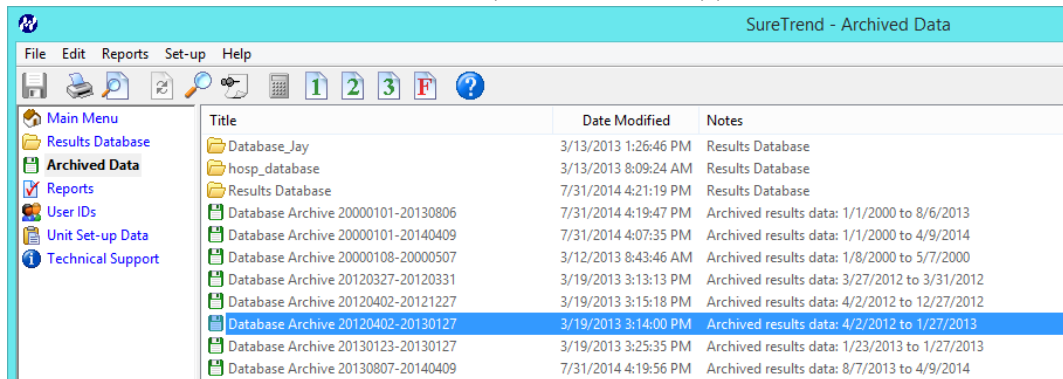


10. You may now uninstall your current version of SureTrend software and Install the latest version. SureTrend may be installed from the disc included in the system box, or downloaded from Hygiena's Microsoft OneDrive at this URL: <http://1drv.ms/UOPsF5>
11. Once the install is complete, continue to follow the steps below to import and restore your data.
12. Restoring data requires two steps: importing archived data and moving the unit information file to a new location.

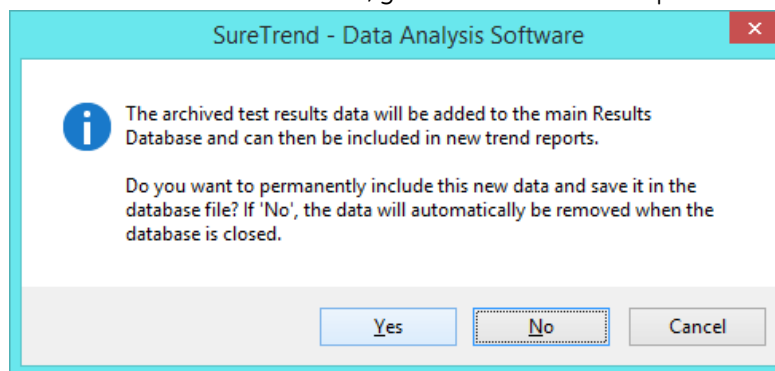
- a. To restore the archived data, launch the new version of SureTrend and select “File> Import”.



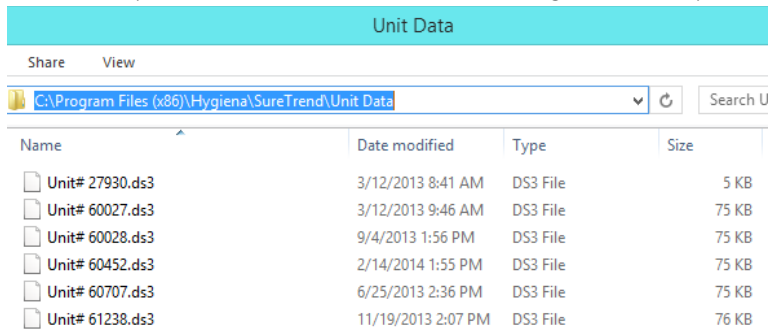
- i. Select the database archive file from your desktop and follow the prompts.
- ii. The file will now be imported and will appear under “Archived Data”.



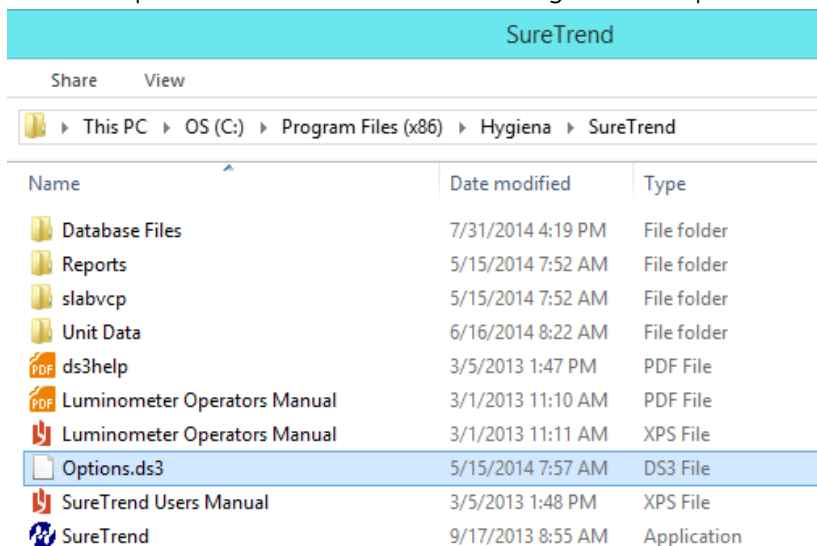
- iii. Double click on the file in SureTrend and select the option “Yes” to add the data to the new database. Moving forward, when new results are uploaded to the SureTrend database, you will have one complete file.



- b. To restore unit data and user data you will move the corresponding files saved on your desktop to the appropriate folder location.
  - i. In File Explorer, navigate to the new Unit Data folder that was installed with the new version of SureTrend. For most users, this is in C:\Program Files \Hygiene\SureTrend\Unit Data
  - ii. Cut and paste the unit and user files from your desktop into this folder.



- c. To restore preferences you will move the Options file saved on your desktop to the appropriate folder location.
  - i. In File Explorer, navigate to the new SureTrend folder that was installed with the new version of SureTrend. For most users, this is in C:\Program Files \Hygiene\SureTrend
  - ii. Cut and paste the unit and user files from your desktop into this folder.



13. Now you are fully upgraded and migration is complete.