

## Directions for Use

### SnapShot Universal ATP Test

#### For use with: BioControl Lightning MVP, Lightning, and IDEXX Luminometers

Part Number: SBC1575 (100 tests)

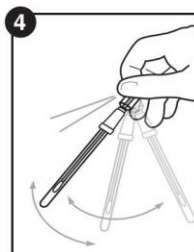
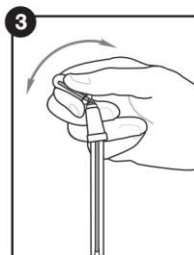
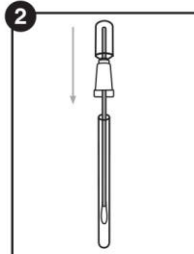


#### Description/Intended Use:

The Snapshot SBC1575 surface testing device is a self-contained ATP device for use with BioControl luminometers. The luminometer combined with Snapshot creates a system for monitoring the hygienic status of processing equipment, surfaces and other environments. Snapshot measures adenosine triphosphate (ATP), the universal energy molecule found in all animal, plant, bacterial, yeast, and mold cells. Product residues, particularly food residues, contain large amounts of ATP. Microbial contamination contains ATP, but in smaller amounts. After cleaning, all sources of ATP should be significantly reduced. Snapshot SBC1575 has been designed to replace the MVP ATP test without having to adjust Pass/Fail thresholds on the luminometer. Snapshot contains Hygiena's unique liquid-stable reagent, giving superior performance and reproducibility over the lyophilized pellet found in the MVP test.

#### Directions for Use:

1. When collecting a sample, make sure to use aseptic techniques. Do not touch the swab or the inside of the sampling device with fingers. Holding the swab tube firmly, twist and pull the top of the swab out of the swab tube. The swab tip comes pre-moistened with a mild detergent. Condensation may be visible on the inside of the swab tube - this is normal. Thoroughly swab a standard 10 x 10 cm (4 x 4 inches) area of interest for a typical flat surface, in a criss-cross pattern, swabbing the area with even coverage, and rotating the swab tip. For irregular surfaces, ensure the swabbing technique remains consistent for and swab a large enough area to collect a representative sample. *Note: The test is designed to detect invisible or trace amounts of product residue. When performing sample collections, it is important to make sure not to overload the swab bud with too much sample. Some products in very high concentration can inhibit the bioluminescence reaction.*
2. After swabbing the desired test area, place swab back in swab tube.
3. Once activated, the sample must be read in the luminometer within 60 seconds. To activate device, hold swab tube firmly and use the thumb and forefinger to break the Snap-Valve by bending the bulb forward and backward. Squeeze the bulb twice, expelling all liquid down the swab shaft.
4. Shake gently for 5 seconds.



5. Insert Snapshot test into the luminometer and close lid. For older BioControl Lightning and IDEXX luminometers, a retrofit cap is required (Part Number: BCCAP).

6. Press "Enter" button to measure test.

#### Interpreting Results:

Results are displayed as a LOG scale (Zones of Cleanliness) and/or Relative Light Unit (RLU). When using the default setting in the Lightning MVP luminometer, readings less than 2.5 zones indicate that the surface is considered clean.

Readings between 2.6-3.0 zones indicate a warning that the surface is not adequately clean. If the reading is greater than 3.0 zones the surface is considered dirty. For more information about RLU and setting thresholds, visit [www.hygiena.com](http://www.hygiena.com) or email a technical representative at: [info@hygiena.com](mailto:info@hygiena.com)

#### Precautions & Warnings:

- If Snapshot test accidentally gets activated do not use.
- Hold the luminometer upright when taking readings.
- Hold Snapshot test upright when activating.
- Read Snapshot test within one minute of activation.
- Keep Snapshot test out of direct sunlight.

#### Storage:

- Devices must be refrigerated at 2-8° C (35-46° F).
- Sample devices should be left out at room temperature for 2 to 5 minutes before use.
- Sample devices will tolerate temperature abuse for 4 weeks at room temperature (<23° C or <73° F).
- Devices have a 15 month shelf life. Check expiration date printed on tube.

#### Safety Information:

The components of Snapshot do not pose any risk to health when used in accordance with standard laboratory practice and procedures in this insert. For further safety instruction, refer to the Snapshot Safety Data Sheet (SDS).

#### Contact Information:

If more information is required, please visit us at [www.hygiena.com](http://www.hygiena.com) or contact us at:

**Hygiena - Americas**  
Phone: 805.388.8007  
Fax: 805.388.5531  
Email: [info@hygiena.com](mailto:info@hygiena.com)

**Hygiena - International**  
Phone: +44 (0)1923 818821  
Fax: +44 (0)1923 818825  
Email: [enquiries@hygiena.com](mailto:enquiries@hygiena.com)