

BAX® System

PCR Assay for Genus *Listeria* 24E

The BAX® System PCR assay for Genus *Listeria* 24E can help companies monitor their environment and products for contamination with *Listeria*, a common indicator organism for other pathogens. Traditional culture methods can take four days or more to get results, and many rapid methods require a two-stage, 48-hour enrichment. With this BAX® System 24E assay, however, accurate and reliable results are available the next day with a single-step, 24-hour enrichment.



QUA 18/06 -07/08
Alternative Analytical
Methods for Agribusiness
<http://nf-validation.afnor.org/en>

Features & Benefits:

- Clear yes-or-no results in as little 29 hours for select matrices
- Carefully designed primers target specific genetic sequences possessed only by the target organisms
- Validated to perform as well or better than standard reference methods for listed product types
- Compatible with many other BAX® System assays for efficient processing
- Flexible protocols available to meet your unique workflows
- Minimal components and simplified workflows to maximize efficiency and ease-of-use
- Internal controls included in every test to validate results even in absence of target

Validations, Certifications and Approvals:

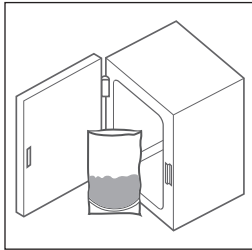
- **AOAC Research Institute**
Performance Tested MethodSM #050903
Validated on frankfurters, spinach, shrimp, queso fresco and stainless steel
- **NF VALIDATION certificate granted by AFNOR Certification** QUA 18/06-07/08
(Validation study performed in accordance with EN ISO 16140 2) Certified according to NF Validation rules for all human food products and production environmental samples

| Hygiena Product Code | Legacy Order Code | Description | Quantity |
|----------------------|-------------------|---|------------------|
| KIT2003 | D13608135 | BAX® System PCR Assay for Genus <i>Listeria</i> 24E | 96 tests per kit |

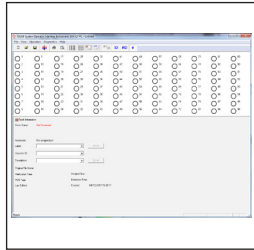


Find support documents, instructional videos, and more at www.hygiena.com

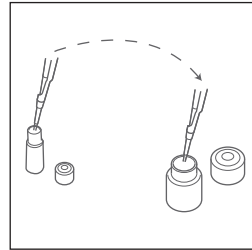
BAX® System Protocol



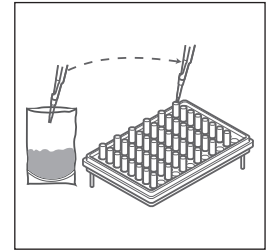
Enrich Samples.



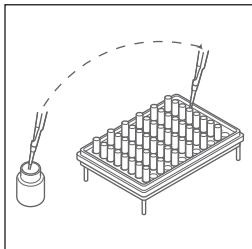
Create rack file and warm up cyclor.



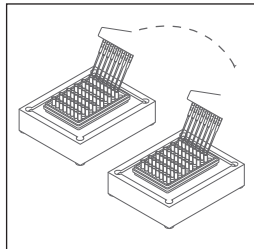
Dilute Lysing agent 1 with 1.8 mL sterile water, and combine in 4:1 ratios with Lysing agent 2.



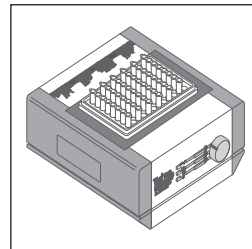
Transfer 50 µL of combined agents to cluster tubes, then add 0.5 mL enriched sample and incubate for 30 minutes at 37°C.



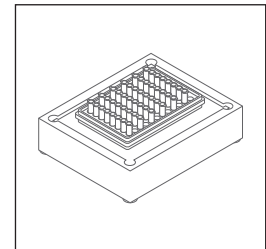
Mix protease with lysis buffer and transfer 200 µL of mixture to new cluster tubes.



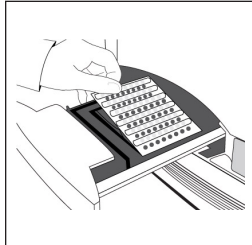
Transfer 5 µL of lysate to cluster tubes.



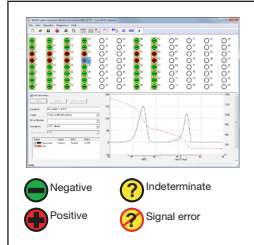
Place samples on automated thermal block for lysis and cooling.



Transfer 50 µL of lysed sample to PCR tubes in cooling block.



Place sealed PCR tubes in cyclor and run program.



Review results.

Related Products

BAX® System PCR Assay for *Salmonella* 2

Produces clear yes-or-no results with minimal hands-on time required. Certified as a Performance Tested Method and an Official Method of Analysis by AOAC.

BAX® System PCR Assay for *L. monocytogenes* 24E

Obtain accurate and reliable results the next day for environmental samples and products with this assay that pinpoints the *L. mono* pathogen with a single step, 24-hour enrichment.

24 LEB Complete

Available enrichment media for customers looking to take full advantage of the rapid time-to-result and ease-of-use offered by select BAX® System *Listeria* assays.

| Hygiena Product Code | Legacy Order Code | Description | Quantity |
|----------------------|-------------------|---|------------------|
| KIT2011 | D14368501 | BAX® System PCR Assay for <i>Salmonella</i> 2 | 96 tests per kit |
| KIT2002 | D13608125 | BAX® System PCR Assay for <i>L. monocytogenes</i> 24E | 96 tests per kit |
| MED2005 | D14654989 | 24 LEB Complete | 2.5 kg tub |



Find support documents, instructional videos, and more at www.hygiena.com/bax